

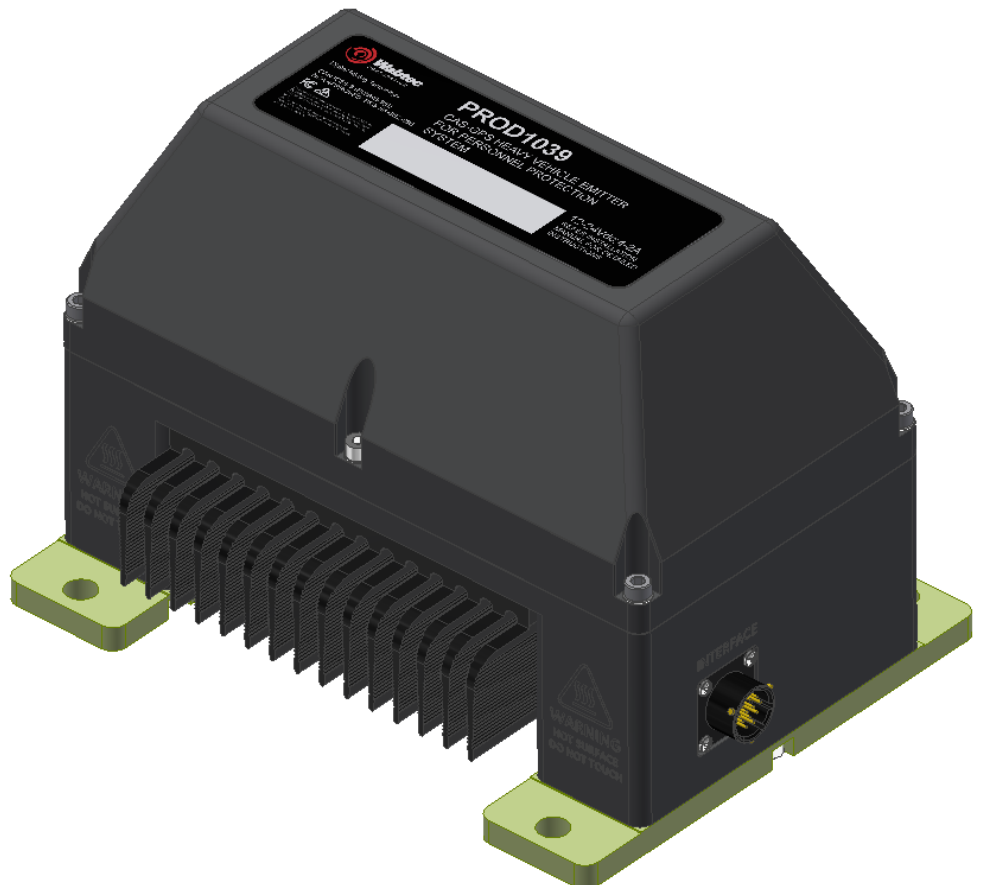
CAS-GPS Heavy Vehicle Personnel Protection System

Comprises a low frequency magnetic (LFM) Emitter with integrated Controller and Magnetic Antenna that is mounted on Heavy Mobile Equipment to alert persons in proximity that are fitted with a Personnel Protection Unit in order to minimize the risk of personal injury.

The unit creates a coded field around the vehicle and transmits vehicle ID and status information over-the-air to persons wearing Personnel Protection Units. The LFM receiver in the Personnel Protection Unit decodes the vehicle ID, status and range (and generates audible alarm when within the preset range) and transmits back to the vehicle using the RF link for proximity alarming on the in-vehicle CAS display.

Features

- Uses low frequency magnetic (LFM) proximity detection that sees through metal and strata and is not dependent on line-of-sight for operation
- Personnel Protection Unit detection up to 12m maximum range
- Vehicle operator safe zone to avoid an operator being alarmed by their own unit
- Two-way alarming when in proximity of a heavy vehicle using LFM emitter and CAS V2V radio link
- Seamless integration with CAS- GPS systems



SPECIFICATIONS

Packaging	Robust IP66 sealed enclosure with robust connector
Range & Accuracy	LFM Emitter: 0 – 12m range +/- 1m accuracy
Response Time	≤ 0.5 second
Emitter Specifications	Frequency band: sub-ELF (<9kHz and outside all defined bands) Field Strength: < 0.5 A/m (transmit power is zero not being a radio wave) Bandwidth: < 600 Hz Modulation: resonant OOK-PPM Protocol: proprietary
Self-Diagnostics	Internal self-checks
Power Supply	Main Controller: 12 / 24Vdc @ 4 / 2 A maximum
Connectors	12-way Military style connector: POWER/SAFE AREA LOOP/ CAN BUS
Indicators	Main Controller: <ul style="list-style-type: none"> • Power Indicator (green) • Transmitter Indicator (amber)
Driver Safe-Zone	Cable loop located in driver's cabin with adjustable safe-zone range to avoid driver being alarmed by own Personnel Protection Unit
Magnetic Antenna	Integrated
Operating Temperature	-20°C to 60°C
Storage Temperature	-40°C to 90°C
Operating Humidity	5% to 95% RH
Protection Rating	IP 66 (IEC 600592)
Weight	5kg
Size	170mm x 250mm x 180mm on mount base (H x W x D)
Compliance	RF Spectrum, EMC, Electrical Safety – for all countries of sale Shock & Vibration (IEC60068) RoHS (Lead Free)
Part Numbers	PROD1006-1 CAS-GPS PERSONNEL PROTECTION UNIT REGION 1 (869 MHz band) PROD1006-2 CAS-GPS PERSONNEL PROTECTION UNIT REGION 2 (920 MHz band) PROD1039 CAS-GPS HEAVY VEHICLE EMITTER FOR PERSONNEL PROTECTION SYSTEM PROD1039-D CAS-GPS HEAVY VEHICLE DUAL EMITTER FOR PERSONNEL PROTECTION SYSTEM

CONTACT

Address	Industrea Mining Technology Pty Ltd T/A Digital Mining Technology PO Box 5107 Fountaindale, New South Wales, Australia, 2258
Telephone	+61 2 4336 1800
Fax	+61 2 4336 1888
Email	GETProductionIMT@wabtec.com
Web	www.wabteccorp.com