

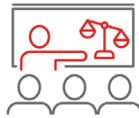


Wabtec's LEAD program is an intensive two-year rotational program that develops domain expertise, leadership skills, and business acumen through a combination of impactful job assignments and top-tier curriculum.

LEAD ENGINEERING



Degree in Mechanical or Electrical Engineering, SW, CS or related field



Strong communicator & influencer



Demonstrate initiative and ability to independently problem solve



Strong technical skill set & prior internship experience



Collaborative team player with ability to lead multicultural teams

THE LEAD ENGINEERING EXPERIENCE

As a **LEAD ENGINEERING** team member, you can have rotations in Product & Software Development • Controls & Systems Engineering • Advanced Mechanical Technology • Data Analytics • Operational Engineering • Energy Management • UX Development • Cloud Based Technology



Four 6-month rotations



Engage with senior leadership



Drive critical business advancements



Build an extensive global network



Penn State World Campus certificate program

LEAD ENGINEERING is currently available in the following countries:
India
United States
**Planned for expansion in Europe in 2023

SAMPLE CAREER PATHS

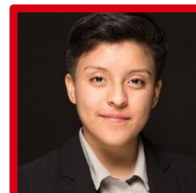


On Program Experience:

1st Rotation: Propulsion Engineer
2nd Rotation: MCA Electronics
3rd Rotation: Wabtec Railway Electronics
4th Rotation: Digital Electronics: Logistics & Analytics

Off Program Role: Propulsion Engineer- Electric Rotating Machines

Vinoth Ratnayaka Mudiyansele



On Program Experience:

1st Rotation: Electrical Packaging
2nd Rotation: Energy Storage
3rd Rotation: Turbocharger
4th Rotation: Mods Engineer

Off Program Role: Cabs Structures and Packaging

Melina Agüero Adame

APPLY BY VISITING

<https://www.wabteccorp.com/careers>